

Corporate Profile

Life with Green Technology

Based on cooperation encompassing clients, local communities and employees, we create new value and contribute to realizing a world of well-being by giving customers delight and satisfaction.



A Spirit of Cooperation between Three Parties

Sankyo Tateyama was founded in 1960 by Masataro Takehira as Sankyo Aluminium Industry. One of his goals was to create a reliable place of employment for his hometown of Takaoka. The meaning of the name “Sankyo” comes from combining the efforts of three parties—our community, our clients and our employees—to grow our business. This has been our guiding principle since the time of the company’s founding.

Sustainability Vision 2050 Life with Green Technology



Message from the President

Creating New Value and Contributing to the Realization of a World of Well-Being



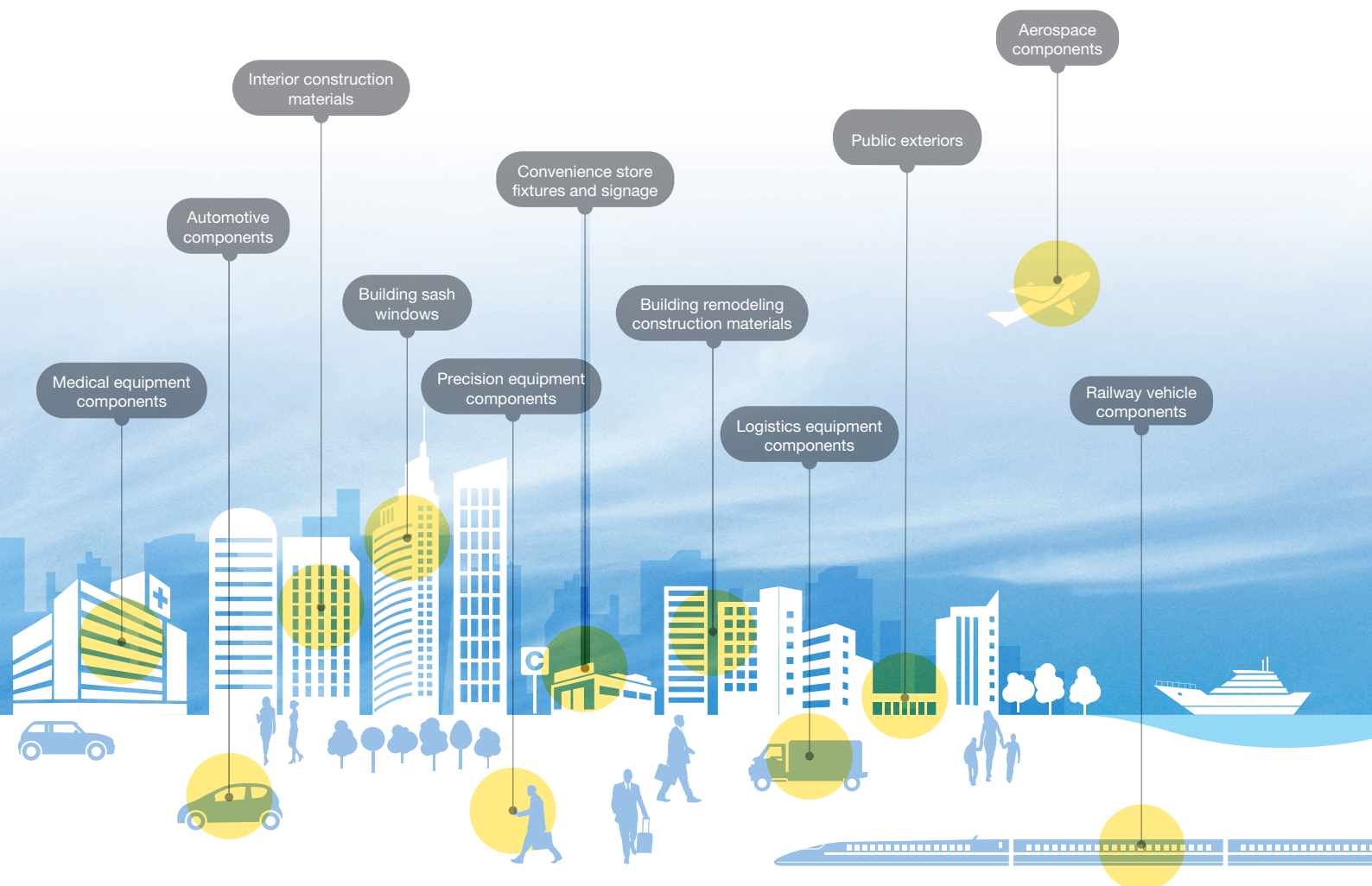
President

平能 正三
Shozo Hirano

Our mission is to contribute to creating comfortable living spaces and satisfying lifestyles for people through our products, services and various business activities. We believe this is our fundamental purpose as a business.

We aim to enrich people's lives with environmental technology. We strongly hope to create new value useful to people's lifestyles by making the most of our environmental technology, as expressed by our sustainability vision, "Sustainability Vision 2050 Life with Green Technology."

We are dedicated to enriching lives by supplying products and services that are environmentally friendly to people and society, always meeting the expectations of our customers, the market and society as a whole.



Sankyo Alumi Company (Construction Materials)



Building Fixtures

Sashes, doors, curtain walls, refurbishment, store fronts, handrails, interior & exterior fixtures, environmental products, etc.

Housing Fixtures

Front doors, windows, crime prevention-related products, interior fixtures, items for use around windows, etc.

Exterior Fixtures

Gate doors, fences, carports, terraces, garden rooms, bicycle storage spaces, walkway shelters, etc.

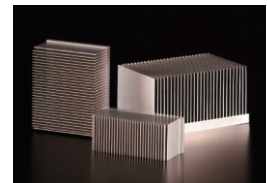
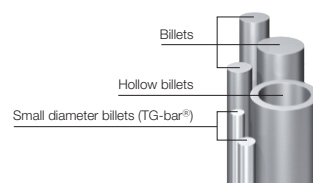


Sankyo Material Company (Materials)



Aluminum and Magnesium Billets and Extrusions

Application fields: Automotive, railway, industrial machinery, construction materials, electrical equipment, etc.



History

1960

1970

1980

1990

2000

1960 Sankyo Aluminium Industry Co., Ltd.

1960 Tateyama Casting Co., Ltd. (established 1948) renamed to Tateyama Aluminium Industry Co., Ltd.

Sankyo Sankyo Aluminium Industry Co., Ltd. **Tateyama** Tateyama Aluminium Industry Co., Ltd.

The idea to bring the aluminum industry to Takaoka formed, sales of aluminum commodities begin nationwide

1960 **Sankyo**

Creation of the "Sankyo Nabe"



The focus of consumption shifts to department stores and supermarkets, sales where products are put on display become the norm

1964 **Tateyama**

"Two-way Aluminum Showcase" goes on sale



"Carport Model 1" goes on sale

1981 **Sankyo**

Production of aluminum carports and front entrances as a comprehensive construction materials manufacturer begins



New high-performance products cater to diversifying home environments

1985 **Tateyama**

Industry-first "Combination Sash" goes on sale



Product development starts to take a female perspective

2008

Industry-first curved front door "Laforce Naturé Curved Door" goes on sale



Tateyama Advance Company (Commercial Facilities)



Store Fixtures

Display fixtures, counters, showcases, register cabinets, and interior work

Signage

Externally lit signage, standing signs, façade signs, projecting signboards, and noticeboards

Store Maintenance

Emergency maintenance, regular maintenance, and call center services



Global Business



Aluminum Billets, Extrusions and Construction Materials (Europe, Thailand, China)

Application fields: Automotive, railway, aircraft, industrial machinery, construction materials, etc.



2010

2024

2003 Sankyo-Tateyama Holdings, Inc.

2006 Sankyo Tateyama Alumi, Inc.

2007 Sankyo Material, Inc.

2005 Tateyama Advance, Inc.

June,
2012
Sankyo
Tateyama,
Inc.

December, 2012
Sankyo Tateyama, Inc.

- Sankyo Alumi Company
- Sankyo Material Company
- Tateyama Advance Company

July, 2015
Global Business
segment added

Reconstruction of the wooden sashes at the Tokyo Station Marunouchi Station Building in aluminum

2012

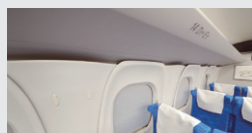
Sashes provided by Sankyo Alumi Company used for all 450 windows in the Tokyo Station Marunouchi Station Building



World's first successful demonstration of horizontal recycling of aluminum from one shinkansen in another

2020

Our extruded products made from recycled aluminum are adopted for luggage shelves in the new Tokaido Shinkansen trains (joint demonstration by Central Japan Railway Company; Nippon Sharyo, Ltd.; Hitachi, Ltd.; Harita Metal Co., Ltd. and Sankyo Material Company)



Source: Central Japan Railway Company

New business model

2021

"agri-cube ID", a plant factory system that provides one-stop services from construction to cultivation and operation support, was delivered to a large plant factory (developed and marketed jointly with Daiwa House Industry Co., Ltd.)



Expansion of Shinminato-higashi Plant commences

2024

The expansion will boost aluminum profile production capacity to meet EV market expansion expected over the medium-to long term
Estimated completion: October 2025





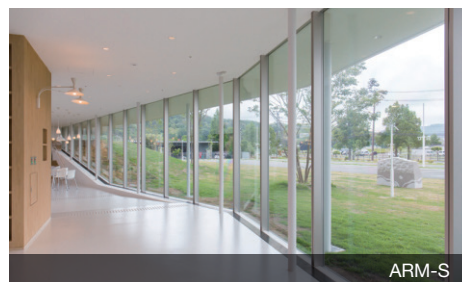
Custom Curtain Wall

Creating Value from the Customers' Perspective, Developing New Business Fields through Environmental Technology

We contribute to enriching people's lives by offering building fixtures that utilize cutting-edge technologies in response to diverse needs, housing fixtures focused on energy savings, barrier-free features and high durability and exterior fixtures that pursue advanced designs and high quality.



Grows-A / High-Spec Sash



ARM-S

Building Business

The construction of office buildings and housing complexes, which are used by many people, requires higher performance with respect to safety, comfort, and convenience. To meet these demands, we provide a wide range of high-quality products, from new construction to renovation.



Custom Curtain Wall



FANOVA 2 / Front Door



ALGEO / High-Spec Sash



AMIS / Interior Fixtures

Housing Business

To ensure that houses can be passed down over many years as valuable assets, we propose products based on the concepts “people-friendly,” “earth-friendly,” and “safety and reassurance.” To respond to a wide variety of customer needs, we provide products that incorporate universal design and products with enhanced resilience and high-insulation features for the creation of comfortable living spaces.

Exterior Business

“Enjoy the excitement of life under the open sky.” We deliver excitement through a wide array of attractive products with a variety of designs and features that bring happiness and smiles to our customers. Such products include multifunctional outdoor space products and products that enhance outdoor space so that customers can more easily enjoy the sunlight and fresh air.



F II / Carport



VILLAWOOD / Artificial Wood Decking

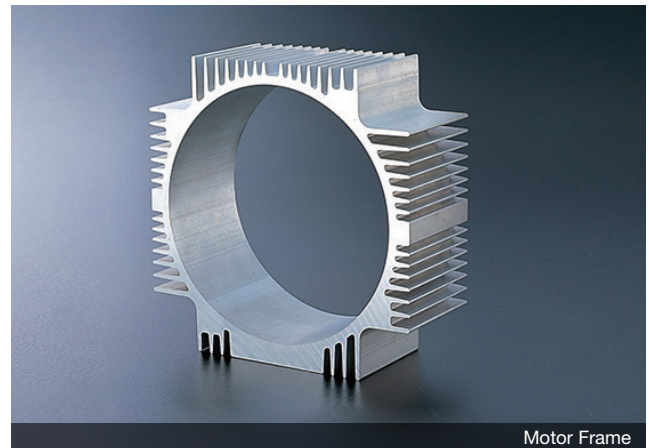


ENERGYEARTH / Carport-type Solar Panel Frame

Giving Shape to Materials: Pursuing the Unlimited Potentials of Materials and Contributing to the Creation of Comfortable Environments

We provide total solutions for design, prototyping, manufacturing, and delivery services for aluminum and magnesium materials and extrusions.

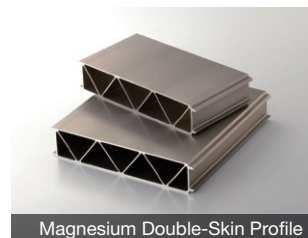
We participate in the planning and design stages of products and properties, and work closely with our customers to propose the best solutions.



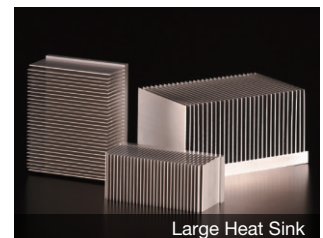
Motor Frame



FA Frame



Magnesium Double-Skin Profile



Large Heat Sink

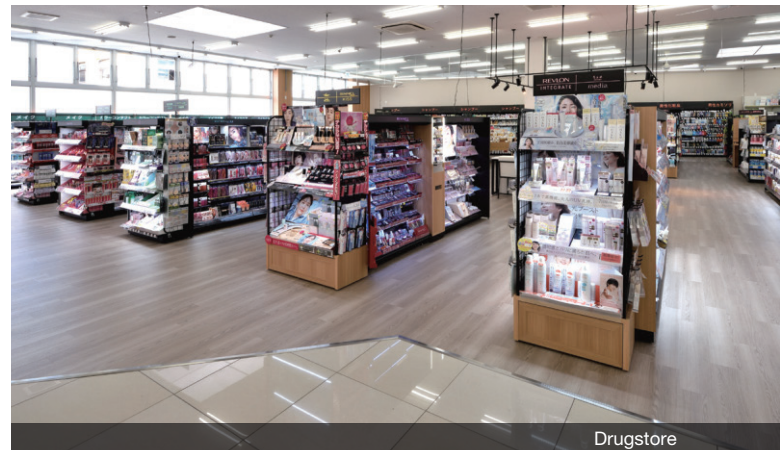


Supermarket

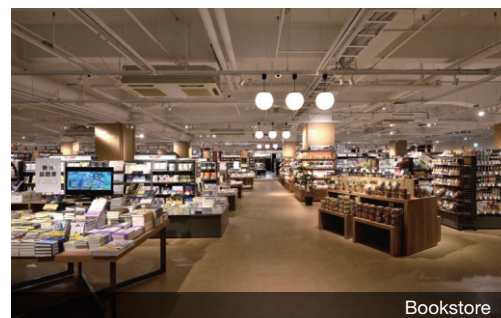
A Space Creator: Making Commercial Spaces Comfortable for People

We provide services for shopping centers, convenience stores and specialty stores such as drug stores, as well as for commercial facilities and corporate customers. Specifically, we offer product display fixtures, counter tables, showcases and interior finishing work, billboards, signage and other outdoor advertising goods in addition to providing maintenance services for stores and related facilities.

From proposals for appealing shop layouts to design, manufacture, construction and maintenance, we offer total support in creating a comfortable space that has value for our customers.



Drugstore



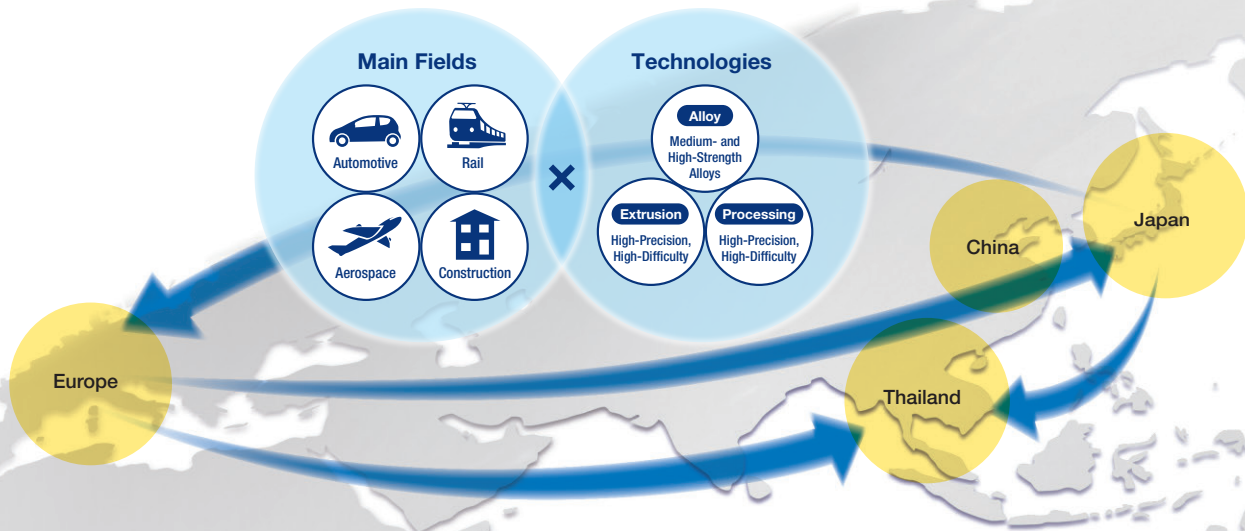
Bookstore



ADVIEW-L / LED Fixture Unit for Exterior Signage Illumination



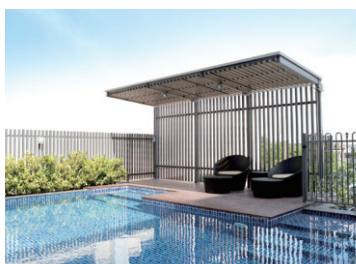
Apparel shop



In Pursuit of High-Value-Added Products as a Global Supplier

At our bases in Europe, China and Thailand, we carry out aluminum casting, extrusion and processing.

We deploy high-level technology from Europe and Japan to other regions for the further expansion of provision of high-value added products as a global supplier.

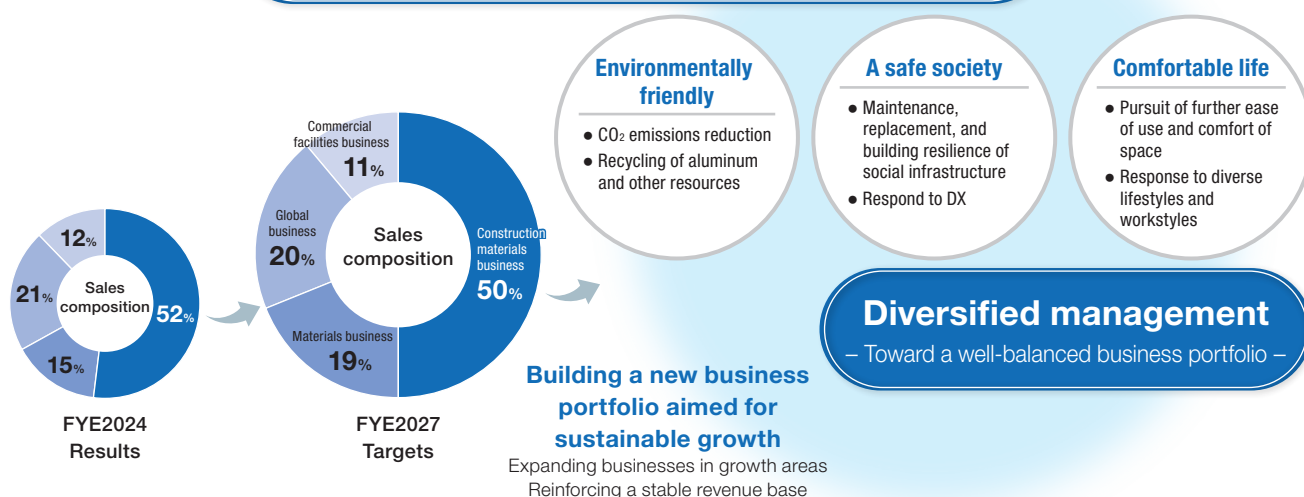


Long-term Vision

Contributing to sustainable and affluent life

– Realizing an environmentally friendly, safe, and comfortable society –

VISION2030



Position of the Medium-Term Management Plan

Positioned as an investment phase where priority is given to building an earnings base and investing in growth, with the aim of achieving VISION2030

Basic policies

Securing stable revenue and getting on the growth track

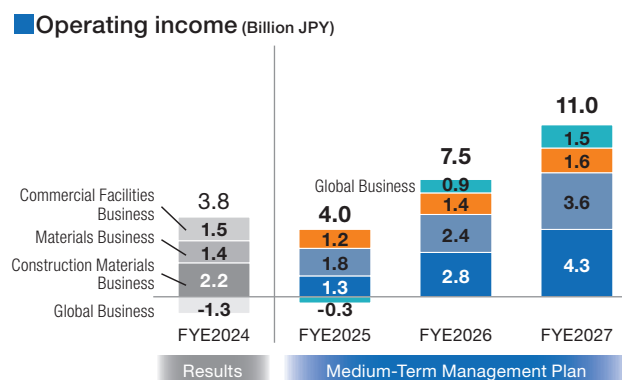
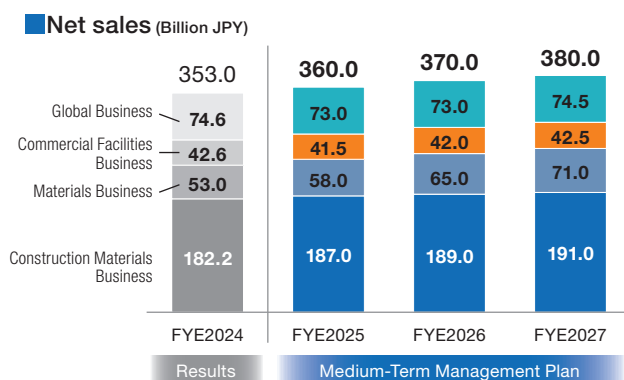
Reform of revenue structure and Growth investment

FYE2027 Numerical targets

Net sales
380.0 billion JPY

Operating income
11.0 billion JPY

ROE
6% or more



Company name	Sankyo Tateyama, Inc.	Major business	1. Research, development, manufacture and sale of building fixtures, housing fixtures, exterior fixtures; manufacture and sales of fabricated products made of rolled aluminum and other metals.
Head office	70 Hayakawa, Takaoka, Toyama, Japan		2. Casting, extrusion, fabrication and sale of aluminum and magnesium.
Date of establishment	June 20, 1960		3. Sales of commercial and general-purpose display fixtures; manufacture and sale of standard signboards and other signage; maintenance of stores and related equipment.
Capital	JPY 15,000 million	Stock exchange listing	Tokyo Stock Exchange, Prime Market (5932)
Settlement term	May 31	Employees	Consolidated: 10,289 / Non-consolidated: 4,822 (As of May 31, 2024)
Number of shares issued	31,554,629 shares (unit: 100 shares)		

 **SankyoTateyama, Inc.**

<https://www.st-grp.co.jp>



カタログNo.
STS0187A
KM.24.10-003